



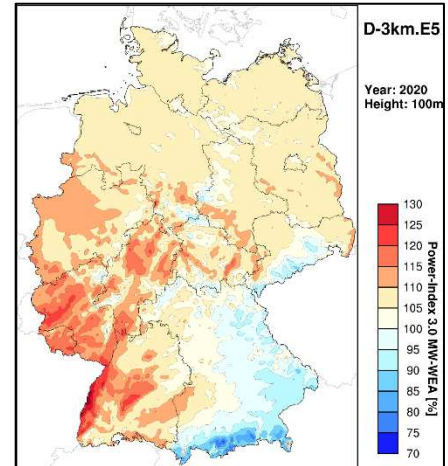
anemos

competence in wind power meteorology

Energy yield index

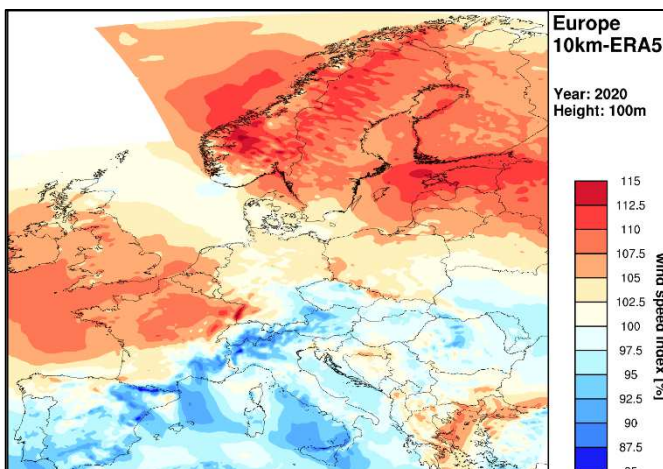
For your production follow-up

- ✓ over 20 years index data
- ✓ monthly updated with only 10 days delay
- ✓ Based on state-of-the-art WRF modelling
- ✓ Validated with many reference wind farms
- ✓ Easily accessible via: awis.anemos.de



Advantages compared to other indices

- ✓ High resolution up to 3 km
- ✓ Accredited and transparent calculation method
- ✓ Independent from wind turbines' energy yield
- ✓ Turbine specific energy yield
- ✓ Clearly defined and selectable reference period
- ✓ 8 common wind turbine types available (60 – 166 m hub height)



Energy yield index regions

- ✓ Germany 3 km
- ✓ France 3 km
- ✓ Austria 3 km
- ✓ Europe 10 km
- ✓ Scandinavia 10 km